

SC Global 2003, Phoenix,
Nov 20, 2003



Karaoke Grid

- A mode of Entertainment Grid

Kazuyuki Shudo (AIST),

Ken-ichi Miyanomae (Waseda University), <- MC

Koichi Iijima (XING, INC.),

Kazuhiro Omura (XING, INC.),

Yasuhiro Funahashi (XING, INC.),

Ryo Katsuma (Waseda U.),

Uske Kuwa (Waseda U.),

Tomo Sonoda (Utagoe, Ltd.),

Satoshi Sekiguchi (AIST),

Yoichi Muraoka (Waseda U.)



You can just sing

on the Grid

in collaboration with your friends

JOYSOUND over **ACCESS GRID**

XING.AIST



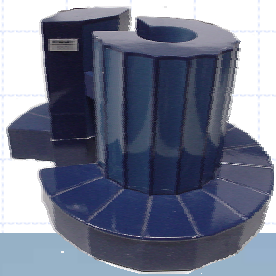
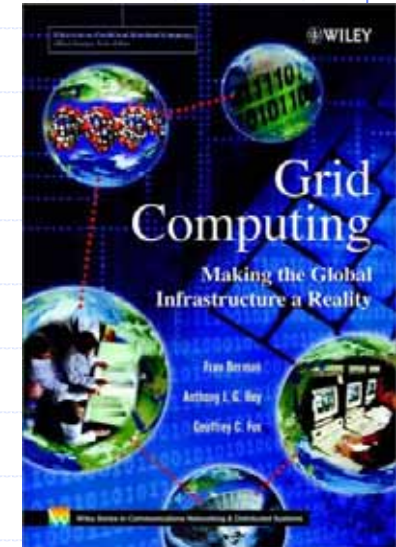
The perspective of Karaoke



- ◆ Karaoke is an entertainment where we sing a (popular) song along an accompaniment. Singings are sole, duet or chorus.
- ◆ Usually, the singings are performed locally.
- ◆ With Grid Technology, this mode of entertainment break through the boundary of distance and provide an opportunity to meet others around the world.

The perspective of Grid

- ◆ An interesting entertainment application.
- ◆ How can Access Grid as a CSCW technology support **human informal activities**.
 - Tele-existence
 - Non-verbal communication



J

NG. AIST



Karaoke Grid node

- ◆ An AG node equipped with a karaoke machine.

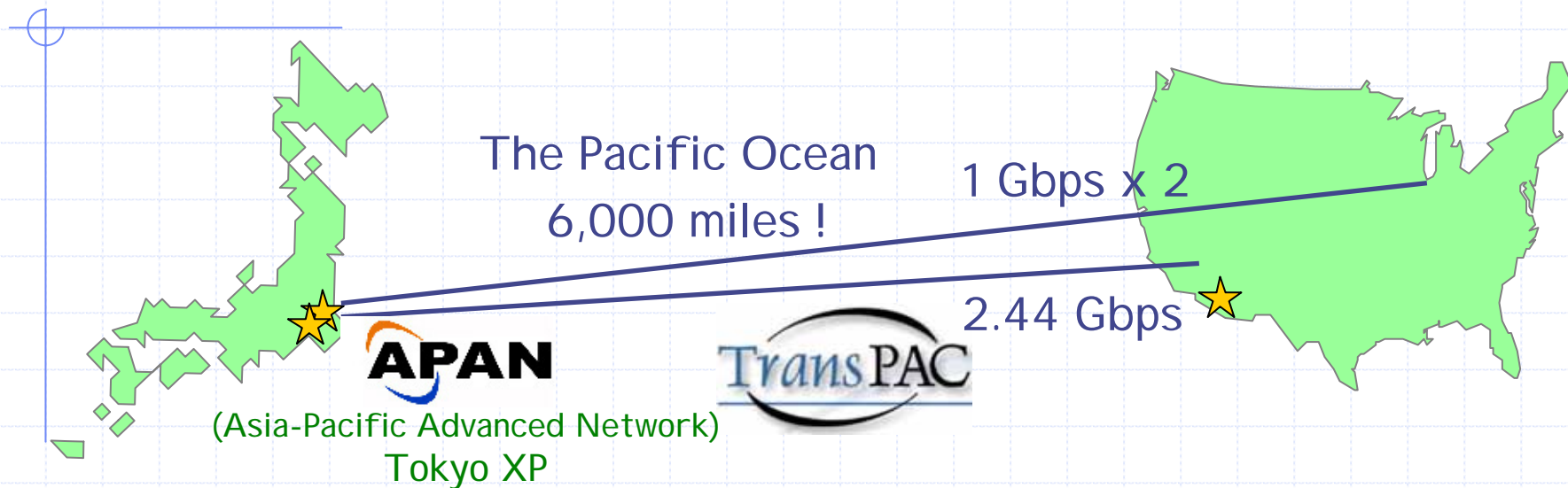


PI G (Personal Interface to the Grid)




Delivery Grid node

Constellation Sites



- ◆ U.S.
 - Phoenix SC Global Showcase
- ◆ Japan
 - Warabi : XI NG karaoke box
 - Waseda University
- ◆ Other sites are expected to join us and sing.

JOYSOUND over **ACCESS GRID**

XING. **AIST** 

Ongoing Challenges

◆ Audio Latency

- If you feel difficulty with delayed singings, adjust the level of audio on RAT window.

◆ Partner Search

- How can we find a good partner singing together?

Organizations

◆ A joint effort between

- **XING, INC**

- ◆ A leading karaoke service provider.

- **AIST**

- ◆ Japan's largest research organization with 3,200 employees.

- **Waseda University**

- ◆ 1,200 full time staff and over 50,000 students.

Sing and Enjoy !

JOYSOUND over ACCESS GRID

XING. **AIST**

